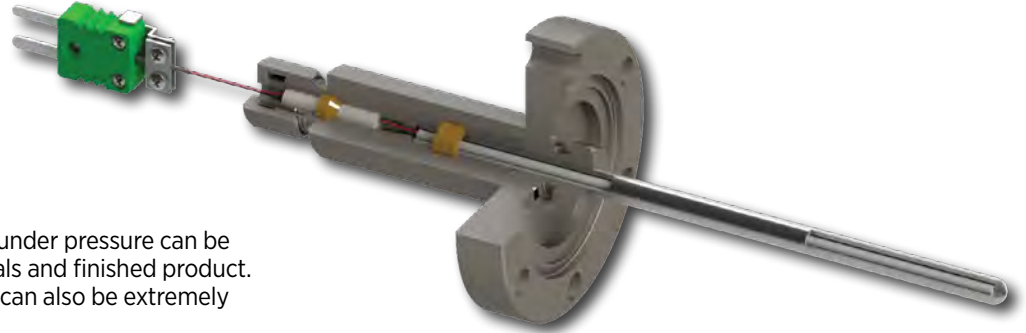


CB Conax Combo Fittings



Eliminate the risk of catastrophic leaks

In-process leaks under vacuum or under pressure can be costly in terms of lost time, materials and finished product. Under certain circumstances, they can also be extremely dangerous.

When customers asked us for a solution that would eliminate the risk of in-process leaks caused by sheath failures, Conax devised the idea for a Combo Fitting that has a seal for the thermocouple sheath and a secondary seal for the wires. The dual seals ensure that, if the sheath breaks or wears out, there will still be no leak into or out of the process.

Vacuum leaks

Conax Combo Fittings are ideal for processes that take many days to complete, utilize expensive raw materials, or when it would be especially costly to lose the finished product due to a vacuum leak into the process.

For example, a solar manufacturer with a 20-day poly-crystalline ingot growth cycle experienced a leak into the chamber during a cycle, ruining the ingot and costing the customer time and money. Now, our Combo Fittings eliminate the risk for potential loss in the future.

Pressure leaks

Leaks out of the process chamber can be even more serious for processes that contain deadly or explosive chemicals.

For example, a Conax customer was running a process to dispose of old chemical weapons. During this process, the bomb would be sealed in a chamber and detonated. Then, the atmospheric temperature inside the chamber would be raised to destroy the chemical contaminants. They came to Conax for a solution that would ensure no lethal gas would leak from the chamber during the disposal process.

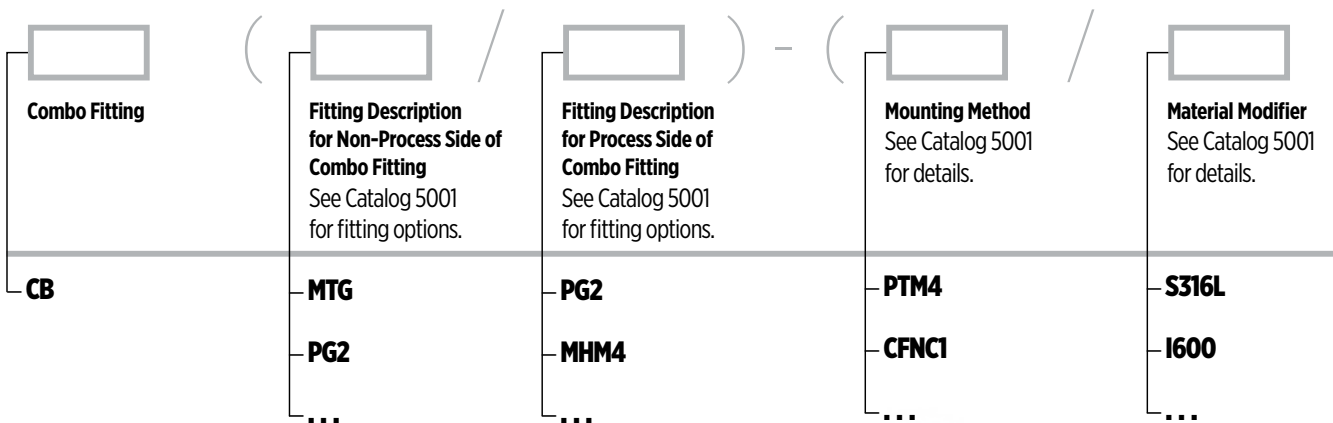
Customized Combo Fittings

Conax routinely creates fittings using a combination of our PG and MTG Fittings. However, we can customize a Combo Fitting to your unique needs using any two Conax fittings.

Talk to us today to find out if a Conax Combo Fitting is right for your process.

HPEG SERIES ▲
CB SERIES

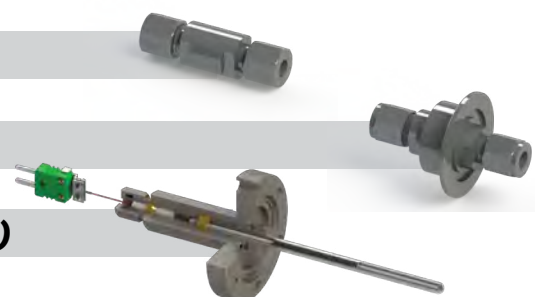
Progressive Description Example



Example 1 **CB(MHM2-062A4V/PG2-250AG)**

Example 2 **CB(MHC4-040A4V/PG4-250AV)-(KF9)**

Example 3 **CB(MTG-24A2V/PG2-250DV)-(CFNC1W/S316L)**



Chico™ is a trademark of Crouse-Hinds™
 CSA™ is a trademark of Canadian Standards Association™
 GraFoil™ is a trademark of NeoGraf Solutions™
 HASTELLOLOY™ is a trademark of HAYNES International™
 INCONEL™ is a trademark of Special Metals™
 Kapton™ is a trademark of E.I. du Pont de Nemours and Company™
 Kevlar™ is a trademark of E.I. du Pont de Nemours and Company™

MONEL™ is a trademark of Special Metals™
 NEC™ is a trademark of National Fire Protection Association™
 PEEK™ is a trademark of Victrex™
 Silcolloy™ is a trademark of SilcoTek™
 SilcoNert™ is a trademark of SilcoTek™
 Silcosteel™ is a trademark of SilcoTek™
 Siltek™ is a trademark of SilcoTek™

Sulfinert™ is a trademark of SilcoTek™
 Teflon™ is a trademark of The Chemours Company™
 Tefzel™ is a trademark of The Chemours Company™
 ULTEM™ is a trademark of Shpp Global Technologies™
 Vespel™ is a trademark of E.I. du Pont de Nemours and Company™
 Viton™ is a trademark of The Chemours Company™